

# Hajj 2025

## Package Brochure

A Deep Dive Into Our Hajj Packages



x



x



# Table of Contents

- ✓ Why Us
- ✓ Shifting vs Non-Shifting
- ✓ Package Breakdown
- ✓ Mina Camps
- ✓ Package Summary
- ✓ Meet the Team



Contents



Why Us



Shift vs. Non Shift



Packages



Mina



Summary



Team





# Why Us?

- 40+ years experience delivering quality Hajj programs.
- Designed to give you the ideal Hajj experience
- Minimum stress
- Personal approach to Hajj.
- Quality time with our shuyookh
- Development program

**From the Pre-Hajj seminar to the online and offline resources, lectures, residence with scholars and students of knowledge .**



Contents



Why Us



Shift vs. Non Shift



Packages



Mina

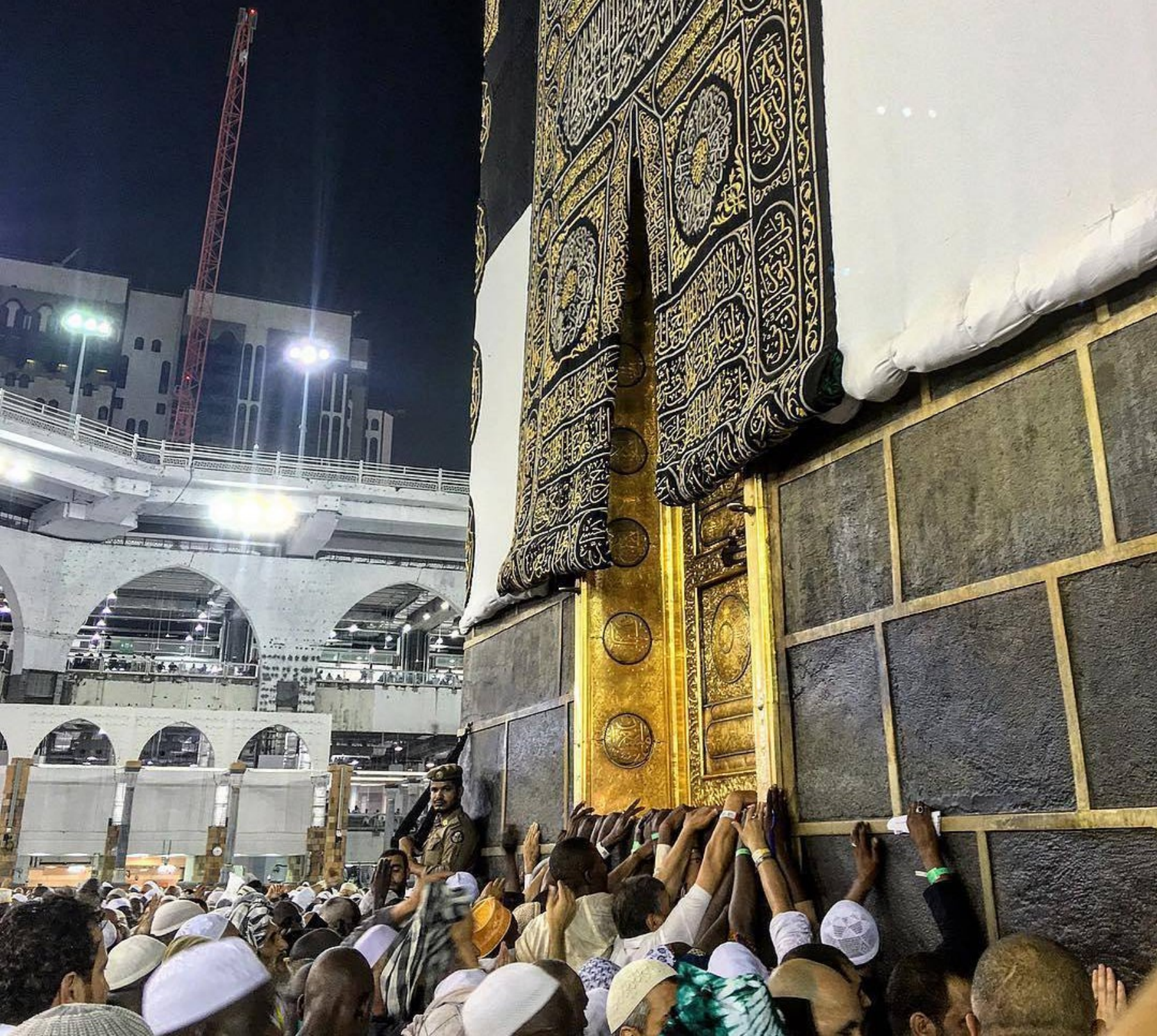


Summary



Team





# What is the Shifting Package?

- It is designed to have two different hotels in Makkah
- One hotel during the Hajj rites
  - 4\* star hotel**
  - Close to where you need to be to perform Hajj**
- One hotel after Hajj
  - 5\* star hotel**
  - Premium hotel in a prime location**



Contents



Why Us



Shift vs. Non Shift



Packages



Mina



Summary



Team



# Why Shifting?

- Scholars  
**Development programme at the Millennium Hotel**
- Close to important hajj sites
- A base to keep your belongings
- Above all:  
**Brotherhood/sisterhood**  
**A bond for life!**
- An ideal package for those able to do Umrah frequently



Contents



Why Us



Shift vs. Non Shift



Packages



Mina



Summary



Team

# Why Non Shifting?

- Close to the Haram  
**Both Makkah and Madinah**
- Minimal checking in/out of hotels  
**Therefore 1 fixed based while in Makkah**



Contents



Why Us



Shift vs. Non Shift



Packages



Mina



Summary



Team

# Package Highlights



All hotels are 4 star or 5 star.  
Therefore, comfort and luxury



Our hotels are handpicked  
specifically for location and  
comfort



Jum'ah in both Makkah and  
Madinah



All packages are half board



Experience the ease of  
Haramain Rail travel between  
Makkah and Madina.



AC Tents and full board buffet  
at Mina & Arafat.



Contents



Why Us



Shift vs. Non Shift



Packages



Mina



Summary



Team



# Premium Shifting

## RAWAF 406 SHAZA

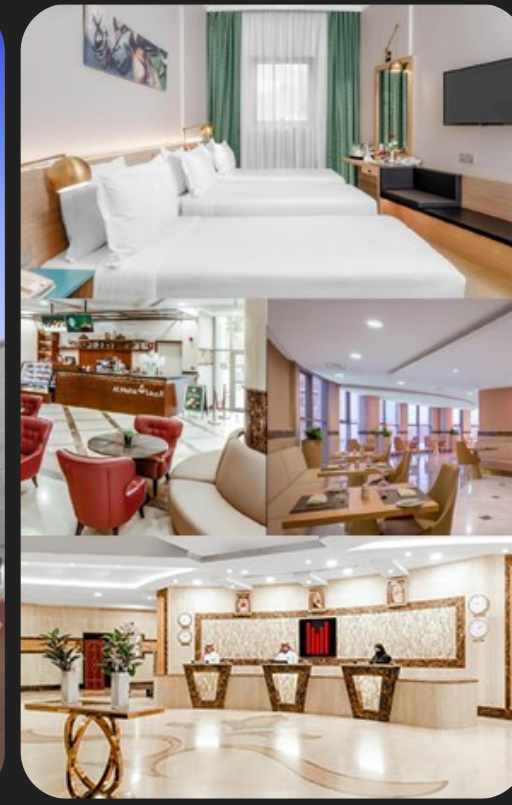
### MADINAH



4★ Mysk Touch Al-Balad

Check in: 30 May  
Check out: 02 Jun

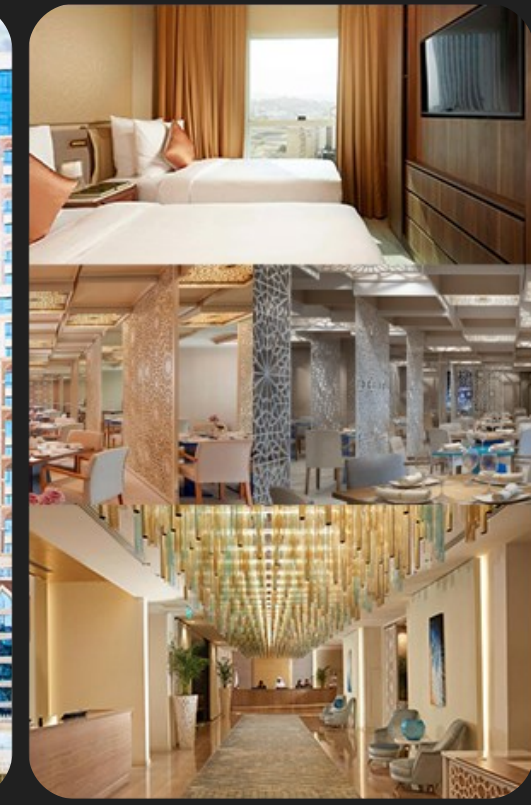
### MAKKAH



4★ M Al Dana By Millennium

Check in: 02 Jun  
Check out: 10 Jun

### MAKKAH



5★ Shaza by Kempinski

Check in: 10 Jun  
Check out: 15 Jun



Contents



Why Us



Shift vs. Non Shift



Packages



Mina



Summary



Team



# RAWAF 406 SHAZA

## MADINAH

## AZIZIYYAH

## DAYS OF HAJJ

## AZIZIYYAH

## MAKKAH

WED 28 MAY	THU 29 MAY	FRI 30 MAY	SAT 31 MAY	SUN 1 JUN	MON 2 JUN	TUE 3 JUN	WED 4 JUN	THU 5 JUN	FRI 6 JUN	SAT 7 JUN	SUN 8 JUN	MON 9 JUN	TUE 10 JUN	WED 11 JUN	THU 12 JUN	FRI 13 JUN	SAT 14 JUN	SUN 15 JUN	MON 16 JUN
------------------	------------------	------------------	------------------	-----------------	-----------------	-----------------	-----------------	-----------------	-----------------	-----------------	-----------------	-----------------	------------------	------------------	------------------	------------------	------------------	------------------	------------------

- Starts in Madinah  
**4 star hotel Mysk Touch Al Balad  
3 nights**
- Travel to Makkah by train  
**Rawaf handles your luggage**
- Aziziyyah  
**4 star hotel Millennium  
Ideal location to perform Hajj  
Development program based here**

- Makkah  
**5 star hotel Shaza by Kempinski  
5 nights**
- Mina Camp  
**Al Muasim**

### Why this package?

- The best hotels at the right times
- Close to Haram
- Better affordability with 5\* hotel experience



Contents



Why Us



Shift vs. Non Shift



Packages



Mina



Summary



Team



# Premium Shifting

## RAWAF 405 ADDRESS

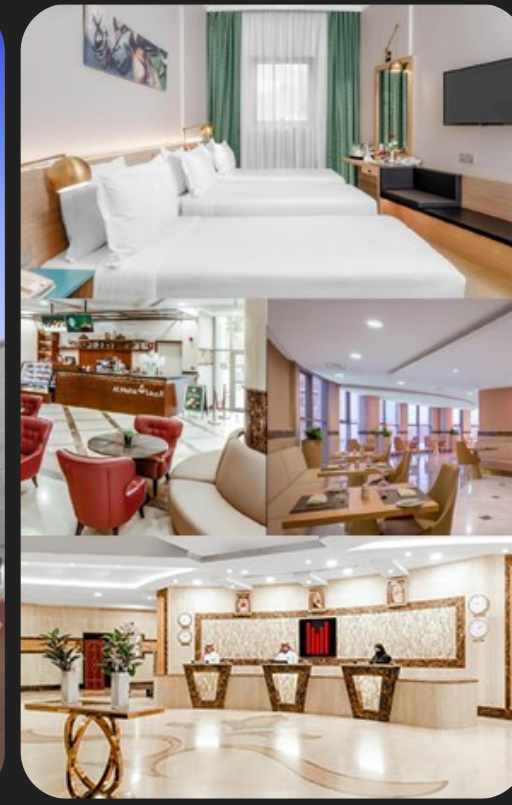
### MADINAH



4★ Mysk Touch Al-Balad

Check in: 30 May  
Check out: 02 Jun

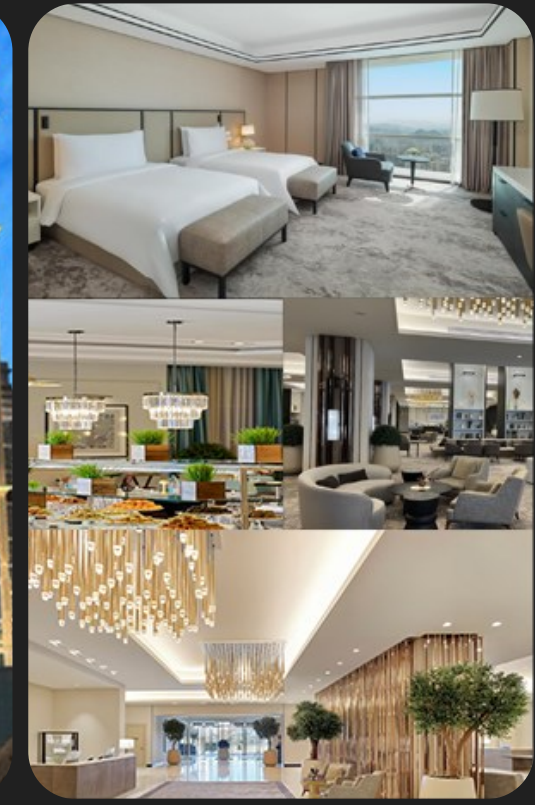
### MAKKAH



4★ M Al Dana By Millennium

Check in: 02 Jun  
Check out: 10 Jun

### MAKKAH



5★ The Address

Check in: 10 Jun  
Check out: 15 Jun



Contents



Why Us



Shift vs. Non Shift



Packages



Mina



Summary



Team



# RAWAF 405 ADDRESS

MADINAH			AZIZIYYAH		DAYS OF HAJJ						AZIZIYYAH		MAKKAH						
WED 28 MAY	THU 29 MAY	FRI 30 MAY	SAT 31 MAY	SUN 1 JUN	MON 2 JUN	TUE 3 JUN	WED 4 JUN	THU 5 JUN	FRI 6 JUN	SAT 7 JUN	SUN 8 JUN	MON 9 JUN	TUE 10 JUN	WED 11 JUN	THU 12 JUN	FRI 13 JUN	SAT 14 JUN	SUN 15 JUN	MON 16 JUN

- Starts in Madinah  
**4 star hotel Mysk Touch Al Balad**  
**3 nights**
- Travel to Makkah by train  
**Rawaf handles your luggage**
- Aziziyyah  
**4 star hotel Millennium**  
**Ideal location to perform Hajj**  
**Development program based here**

- Makkah  
**5 star hotel The Address**  
**5 nights**
- Mina Camp  
**Al Muasim**

## Why this package?

- The best hotels at the right times
- 5 star luxury hotel
- Prime location next to the Haram



Contents



Why Us



Shift vs. Non Shift



Packages



Mina



Summary



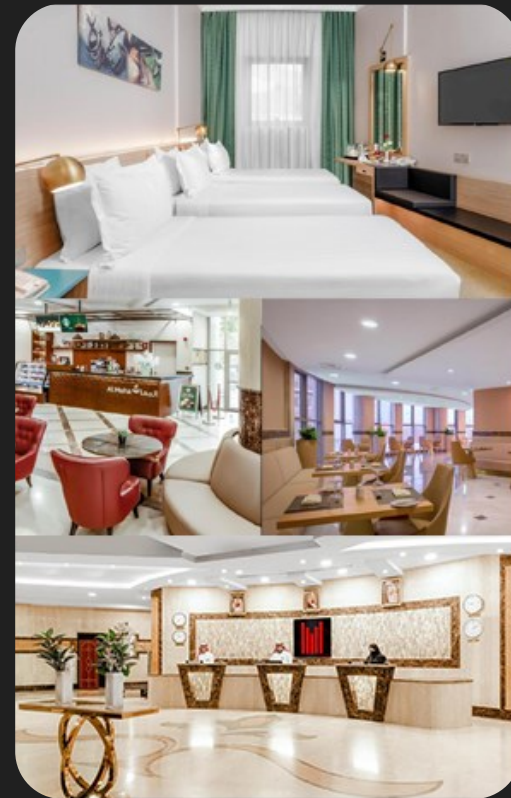
Team



# Premium Non-Shifting

## RAWAF 363 MILLENIUM

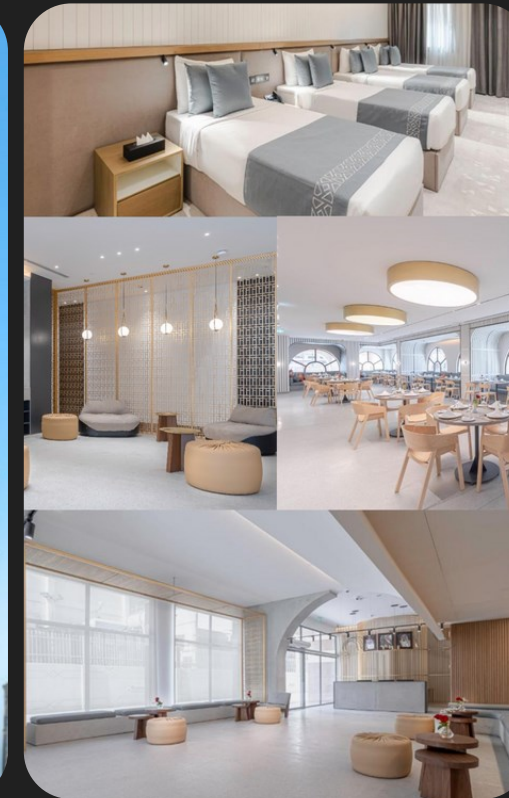
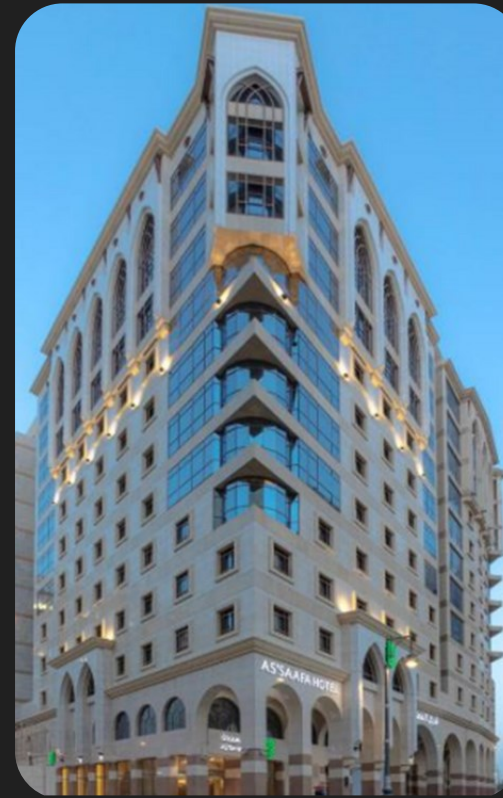
### MAKKAH



4★ M Al Dana By Millennium

Check in: 31 May  
Check out: 13 Jun

### MADINAH



4★ As Saafa

Check in: 13 Jun  
Check out: 16 Jun



Contents



Why Us



Shift vs. Non Shift



Packages



Mina



Summary



Team



# RAWAF 363 MILLENIUM

## AZIZIYYAH

## DAYS OF HAJJ

## AZIZIYYAH

## MADINAH

WED 28 MAY	THU 29 MAY	FRI 30 MAY	SAT 31 MAY	SUN 1 JUN	MON 2 JUN	TUE 3 JUN	WED 4 JUN	THU 5 JUN	FRI 6 JUN	SAT 7 JUN	SUN 8 JUN	MON 9 JUN	TUE 10 JUN	WED 11 JUN	THU 12 JUN	FRI 13 JUN	SAT 14 JUN	SUN 15 JUN	MON 16 JUN
------------------	------------------	------------------	------------------	-----------------	-----------------	-----------------	-----------------	-----------------	-----------------	-----------------	-----------------	-----------------	------------------	------------------	------------------	------------------	------------------	------------------	------------------

- Starts in Makkah, Aziziyyah  
**4 star hotel Millennium**  
**Ideal location to perform Hajj**  
**Development program based here**
- Travel to Madinah by train  
**Rawaf handles your luggage**
- Madinah  
**4 star hotel As Saffa**  
**3 nights**

- Mina Camp  
**Al Muasim**

### Why this package?

- Most affordable package
- 4 star hotels
- Quality time with scholars
- Fixed hotels – non shifting



Contents



Why Us



Shift vs. Non Shift



Packages



Mina



Summary



Team

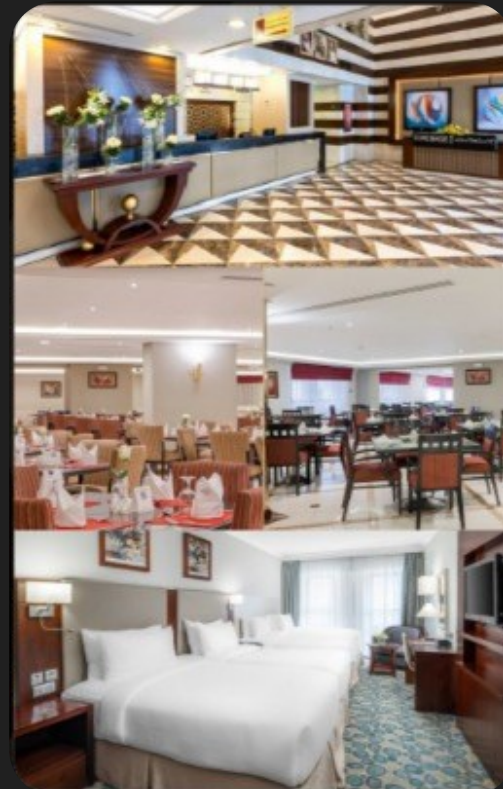
# Luxury Non-Shifting

## RAWAF 101 PULLMAN

### MADINAH

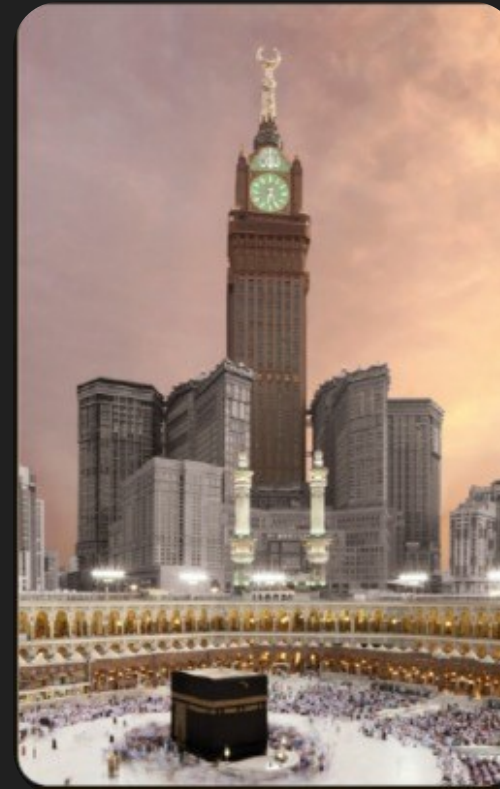


5★ Al Aqeeq

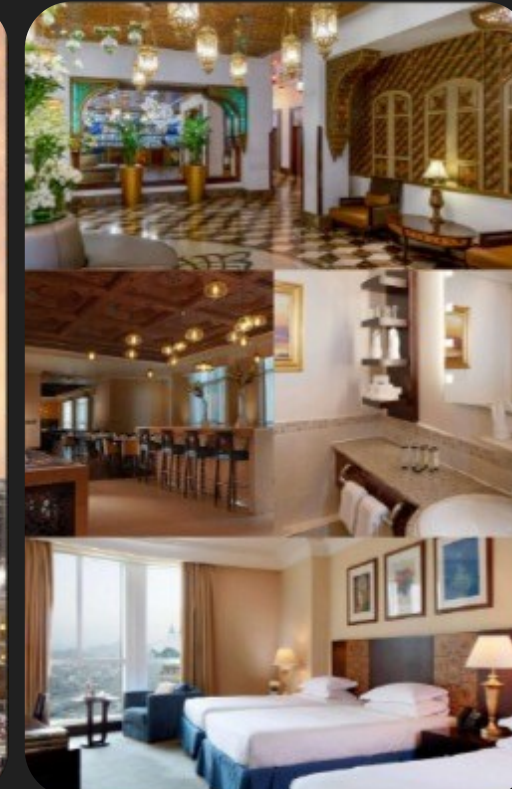


Check in: 28 May  
Check out: 31 May

### MAKKAH



5★ Pullman ZamZam



Check in: 31 May  
Check out: 09 Jun



Contents



Why Us



Shift vs. Non Shift



Packages



Mina



Summary



Team



# RAWAF 101 PULLMAN

## MADINAH

## MAKKAH

## DAYS OF HAJJ

## MAKKAH

WED 28 MAY	THU 29 MAY	FRI 30 MAY	SAT 31 MAY	SUN 1 JUN	MON 2 JUN	TUE 3 JUN	WED 4 JUN	THU 5 JUN	FRI 6 JUN	SAT 7 JUN	SUN 8 JUN	MON 9 JUN	TUE 10 JUN	WED 11 JUN	THU 12 JUN	FRI 13 JUN	SAT 14 JUN	SUN 15 JUN	MON 16 JUN
------------------	------------------	------------------	------------------	-----------------	-----------------	-----------------	-----------------	-----------------	-----------------	-----------------	-----------------	-----------------	------------------	------------------	------------------	------------------	------------------	------------------	------------------

- Starts in Madinah

**5 star hotel Al Aqeeq**  
**4 nights**  
**Prime location**

- Travel to Makkah by train

**Rawaf handles your luggage**

- Makkah

**5 star hotel Pullman ZamZam**  
**8 nights**

- Mina Camp

**Majar Al-Kabsh**

### Why this package?

- Most luxurious package
- 5 star hotels
- Arrive in Makkah 3 days prior to Hajj
- Prime location
- Walking distance from Haram
- Fixed hotels – non shifting



Contents



Why Us



Shift vs. Non Shift



Packages



Mina



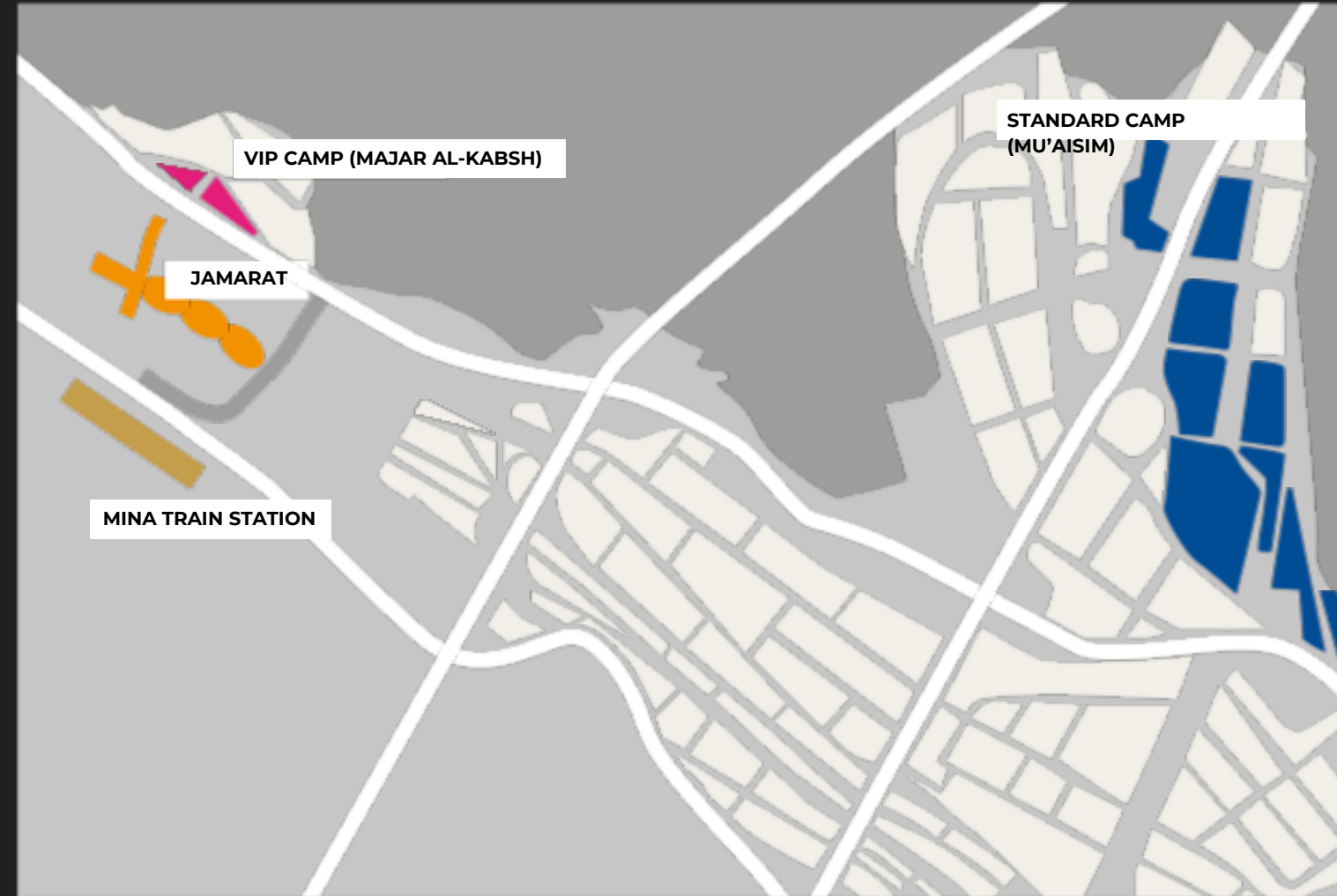
Summary



Team

## Majar Al-Kabsh Camp

- **Location:** Very close to the Jamarat, about 300 to 700 meters away.
- **Facilities:** Premium services with air-conditioned tents, separate areas for men and women, prayer areas, modern sanitary facilities
- **Accessibility:** Proximity to the Jamarat makes it ideal for elderly pilgrims and those with reduced mobility.



## Muaism Camp

- **Location:** About 4km from the Jamarat
- **Facilities:** Air-conditioned tents, separate areas for men and women and modern sanitary facilities.
- **Accessibility:** Easily accessible, approx 45min walk to reach the Jamarat



Contents



Why Us



Shift vs. Non Shift



Packages



Mina



Summary



Team



# Package Summary

Choose from our diverse range of packages tailored to meet your needs

## RAWAF 406 SHAZA

Shifting

16  
Days

30 May - 15 Jun



## RAWAF 405 ADDRESS

Shifting

16  
Days

30 May - 15 Jun



## RAWAF 363 MILLENNIUM

Non-Shifting

16  
Days

31 May - 16 Jun



## RAWAF 101 PULLMAN

Non-Shifting

13  
Days

28 May - 09 Jun



Contents



Why Us



Shift vs. Non Shift



Packages



Mina



Summary



Team



# Package Features



Dedicated group flights for your convenience.



Experience the ease of Haramain Rail travel between Makkah and Madina.



AC Tents and full board buffet at Mina & Arafat.



Contents



Why Us



Shift vs. Non Shift



Packages



Mina



Summary



Team



# Loading eWallet

Nusuk charges for packages in Saudi Riyals only, so we recommend researching various multicurrency accounts for the **best exchange rate** and **lowest transfer fees**.

A few options are listed below:



Starling  
Bank



Contents



Why Us



Shift vs. Non Shift



Packages



Mina



Summary



Team

# Our Team

Meet our experienced Hajj experts and dedicated Mashayekhs who will be with you every step of the way



**Hunafaa**

[www.hunafaa.com](http://www.hunafaa.com)



**Rihlaat**

[www.rihlaat.org](http://www.rihlaat.org)



**An-Nakhlah**

[www.an-nakhlah.com](http://www.an-nakhlah.com)



SH. DR SAQIB QURAISHI



SH. GULRAZ GACHI



SAYED MIAH



SH. HAITHAM AL-HADDAD



SH. FARID HAIBATAN



SH. FUAD ABDO



SH. DR ABU KHALID IMRAN



SH. NAYEF SHEIKH



SH. ABU MUHAMMAD SALEH



ABUL HUSSAIN



ALI HUSSAIN



SHEKHUL ISLAM



YUNUS ABDULLAH



JAMIL RASHID



AMAN DHALI WAL



RAHIM DARR



THOUFIQ AHAMED



SHUMON MIAH



Any Questions

# Thank You

## Join Us



Contents



Why Us



Shift vs. Non Shift



Packages



Mina



Summary



Team